

Village of Clarendon Hills Recycling Collection Services

PAPER MATERIALS

Newspaper

- all newspaper inserts acceptable

Magazines and Catalogs

- glossy and non-glossy accepted

Telephone Directories

- covers do not need to be removed

Kraft Brown Paper Bags

- paper grocery bags

Corrugated Cardboard

- cardboard boxes
- pizza boxes- only if no food residue

Paperboard (Chipboard)

- cereal boxes
- clothing boxes
- pasta boxes
- tissue boxes

Wet Strength Carrier Stock

- carriers for beer and soda

Frozen Food Boxes

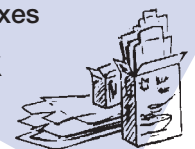
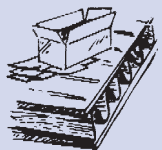
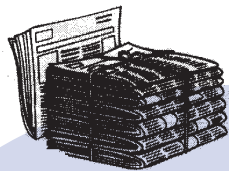
Junk Mail

- brochures
- flyers
- greeting cards
- advertisements
- post cards
- window envelopes

Mixed Paper

- stationery
- notebook paper
- post-it/notes
- computer paper
- typing paper
- bond envelopes

NO food residue

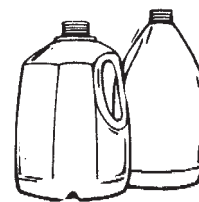


NON-PAPER MATERIALS

PLASTIC

PET (#1) Plastic Bottles & Containers

- 2-liter soda bottles
- plastic beverage containers
- plastic plates and trays
- plastic flower pots
- other #1 non-bottle shaped containers



HDPE (#2) Plastic Bottles & Containers

- laundry detergent
- milk and water bottles
- margarine tubs
- shampoo and personal care bottles
- other #2 non-bottle shaped containers
- plastic cups
- baby wipe containers

PVC (#3) Bottles

- health and beauty-aid bottles

LDPE (#4) Bottles and Containers

- ice cream tubs
- misc. dairy product containers
- margarine tubs

PP (#5) Bottles and Containers

- yogurt tubs
- sour cream tubs
- misc. condiment bottles
- cottage cheese tubs
- syrup bottles

OTHER (#7) Containers

Plastic 6- & 12-pack rings

NO film plastic, plastic wrap, or plastic bags

NO packing peanuts

NO motor oil, anti-freeze, pool chemical, or other hazardous waste containers

RECYCLING COLLECTION GUIDELINES

General Provisions

- Recycling is collected at the curb. Please place your recycling cart on the parkway within two feet of the curb by 6 AM on your scheduled pickup day.
- Carts are emptied by mechanical lifters. **Recycling carts should be placed so the wheels and handle are facing your house.** Please do not place your cart under low tree branches, within three feet of mailboxes, other improvements or other containers.
- If you have additional material that will not fit in your cart, it may be placed out for collection in recycling bins or paper bags. Recyclable material should not be placed in plastic bags.
- Carts are the property of Republic Services. Do not remove your cart from your property.

Preparation of Material

- All food and beverage containers should be rinsed and free of food. Please remove caps and lids. You do not need to separate paper from non-paper materials.
- Please do not recycle paper products that have been soiled with food residue, such as paper plates and pizza boxes with any food contamination.
- Please cut or fold corrugated containers into three foot by three foot pieces so they can fit into truck compartments. Flatten all corrugated cardboard, paperboard and wet strength carrier stock and remove any non-paper packing materials.

Check out the Village of Clarendon Hills website at www.clarendonhills.us for seasonal information concerning household waste, yard waste, and recycling.

METAL CONTAINERS

Rinse clean of food or other products

- aluminum cans
- aluminum foil
- steel or tin cans
- empty aerosol cans
- aluminum baking trays/pie plates
- empty paint cans- lids off, must be scraped clean



NO plastic paint cans or buckets

NO gasoline cans

NO hazardous chemical cans

GLASS CONTAINERS

Rinse clean of food or other products

Remove all caps and lids

- bottles and jars only
- brown, green, and clear glass

NO mirrors, ceramics or window glass accepted



MILK CARTONS & DRINK BOXES

Please empty, rinse & flatten (Straws may be included)

- gable top milk and juice cartons
- juice boxes

LOOK INSIDE FOR IMPORTANT INFORMATION ON RECYCLING.
Please note: Allied Waste is now operating under the name of Republic Services. The address and phone number are unchanged.

- Christmas and other holiday trees will be collected at no charge during the first two weeks in January. (Please check the Village website for exact dates.) No yard waste sticker is needed. Please remove all ornamentation, tinsel and garlands before placing your tree at the curb.
- During October and November, yard waste stickers are not required for paper yard waste bags and cans of leaves. Please note that containers with material other than leaves or mixed with leaves will require a yard waste sticker.

Christmas Tree Collection

- All bundles must have a Clarendon Hills yard waste sticker attached.
- The maximum weight of bundles is 60 pounds. Bundles must be no more than four inches in diameter and 18 inches in length. Individual branches must be no more than four feet in length.
- Please do not use plastic binding or metal.
- Brush must be bundled with natural rope or twine. Bundles must be no more than four feet in length.

Brush

- Seasonal yard waste subscription service with carts is available for an additional charge. Please contact Republic Services at (630) 964-3232 for arrangements.
- Glass clippings, leaves and plant material must be placed in 33-gallon paper bags or garbage cans with a Clarendon Hills yard waste sticker affixed. The maximum weight of containers is 60 pounds. Plastic bags cannot be collected. If a can is used, it must be clearly marked as "Yard Waste." Please loop the yard waste sticker around a can handle.

Containers

- Yard waste is collected at the street or roadside on scheduled collection days from April 1st through November 30th. Yard waste consists of grass clippings, twigs, brush, leaves and plant materials such as weeds, unwanted plants and roots.
- Please make sure material is free of dirt.
- Do not mix yard waste with refuse or recycling. Each is collected by a different truck and transported to a different processing or disposal facility.

YARD WASTE COLLECTION

- Materials such as paint, pesticides, poisons, cleaning solvents, gasoline, used oil, and other automotive fluids are considered to be household hazardous waste. Flammable, toxic, corrosive or reactive products cannot be included with your regular refuse for disposal. For information on options for disposal of these items, please contact the DuPage HHW Hotline at (630) 407-6760 or check the "Waste and Recycling" section of the county website at www.dupagenco.org/recycling.
- For large construction or cleanup projects, temporary large containers are available through Republic Services. Please contact Republic Services at (800) 345-1408 for prices and availability.

HOUSEHOLD HAZARDOUS WASTE

- Construction and building materials, unbound carpeting, sod, earth, concrete or rocks and loose material that do not fit in a can or bag is collected as a special pickup. Please call Republic Services at (630) 964-3232 to get a quote on the cost of this service and to schedule a collection.
- For large construction or cleanup projects, temporary large containers are available through Republic Services. Please contact Republic Services at (800) 345-1408 for prices and availability.

Special Collections and Temporary Large Containers

- Household waste may be placed in either approved containers or contractor supplied carts. Garbage cans and bags must be no larger than 33 gallons, and weigh no more than 60 pounds. All cans must have two handles. Please check container size before purchasing new cans; oversized containers will not be collected.
- In order to reduce windblown litter, please place refuse in plastic bags inside refuse containers.
- Bulk items that do not fit in cans or bags and many large appliances may be placed at the street or roadside for pickup, provided they can be loaded into Republic Service's trucks without assistance. Place a Clarendon Hills refuse sticker on each bulk item or large appliance. Bulk items include sofas, tables, mattresses, box springs, bookcases, dressers, standard sized televisions and large appliances. Please note that large appliances that contain Freon or other refrigerants require a special collection at an additional fee. Please contact Republic Services in advance to arrange for the collection of an appliance with refrigerants or if you have a question about whether a bulk item can be collected.

Acceptable Containers

- New residents must contact Republic Services at (630) 964-3232 to establish service.
- Residents may choose a service level. Four service levels are available:
 - Service Level 1 Two 33-gallon containers or bags at the curb
 - Service Level 2 One 65-gallon contractor supplied refuse cart at the curb
 - Service Level 3 One 95-gallon contractor supplied refuse cart at the curb
 - Service Level 4 Two 33-gallon cans or bags at the backdoor
- Backdoor service is for refuse only; recycling and yard waste is collected from the parkway.
- Republic Services bills quarterly in advance. Payment is expected thirty days from the billing date.
- If you have more waste than allowed by your regular service level, set out refuse in a 33-gallon can or bag with a Clarendon Hills refuse sticker attached. Please loop stickers around garbage can handles; stickers should be affixed to plastic bags.
- If you are 65 years old or older and are the head of a household you may be eligible for a discount. Please contact Republic Services for details.

REFUSE COLLECTION Service Options

- The normal service schedule may be affected by the following holidays: New Year's Day, Memorial Day, Independence Day, Labor Day, and Christmas. If a holiday falls on a Sunday or Monday, service is delayed until Tuesday. Service to homes south of 55th Street is delayed one day when one of these holidays falls on a Sunday, Monday, Tuesday or Wednesday.
- Materials must be set out for collection by 6 A.M. Do not place material in the street or roadway. Materials should be placed at the street or roadside no sooner than the evening before collection. As a courtesy to your neighbors, please remove empty containers from the street or roadside as soon as possible after collection.

GENERAL PROVISIONS

- Refuse, recycling and yard waste are collected on Monday, except for homes that are located south of 55th Street where collection is on Wednesday.
- Clarendon Hills, in cooperation with Republic Services, is pleased to provide this reference guide. While not all included, this guide is designed to provide you with information on the recycling, household waste and yard waste program for Clarendon Hills. Please feel free to contact either Republic Services at (630) 964-3232 or the Village Office at (630) 286-5400 should you need any additional information.

Village of Clarendon Hills Refuse and Recycling Guide

Village of Clarendon Hills

How to Use This Guide

This guide is designed to provide you with a quick and easy reference to the recycling and solid waste services available for Clarendon Hills residents. General information on household waste and yard waste service is found on the first foldout. The inside foldout contains a complete reference guide for recycling, explaining the different types of recyclable materials and how to prepare them for pickup.

Rate Schedule

Service	7/1/11-06/30/12	7/1/12-06/30/13	7/1/13-06/30/14
2 Can Weekly Service (Per Month)	\$18.07	\$18.52	\$18.98
Back Door 2 Can Collection (Per Month)	\$29.30	\$30.03	\$30.78
Refuse/Yard Waste Sticker (Per Sticker)	\$2.20	\$2.25	\$2.30
Yard Waste Toter (Per Month)	\$26.97	\$27.64	\$28.33
Refuse 65 Gallon Cart (Per Month)	\$20.07	\$20.57	\$21.09
Refuse 90 Gallon Cart (Per Month)	\$24.86	\$25.48	\$26.12

Sticker Vendors

- Ace Hardware, 1 S. Prospect, Clarendon Hills
- Dominick's, 4 E. Ogden, Westmont
- Jewel, 55th and Holmes, Clarendon Hills
- Village Hall, 1 N. Prospect, Clarendon Hills

For additional information on services available:

Republic Services
 5050 W. Lake St.
 Melrose Park, Illinois 60160
 (630) 964-3232

Village of Clarendon Hills
 1 N. Prospect Avenue
 Clarendon Hills, Illinois 60514
 (630) 286-5400

Recycling Program Reference Guide for Clarendon Hills



VILLAGE OF CLARENDON HILLS
 1 N. PROSPECT AVENUE
 CLARENDON HILLS, IL 60514

Village of Clarendon Hills



SOLID WASTE AND RECYCLING PROGRAM

Republic Services: (630) 964-3232
 Clarendon Hills: (630) 286-5400



REFERENCE GUIDE



Here's what you need to know to get started!

- Please place your Republic Services Recycling Cart at the curb at least three feet away from trees, mailboxes or other improvements. **The container should be placed with the handles and wheels facing your house.**
- All containers should be at the curb by 6 AM on your service day.
- All food and beverage containers should be rinsed and free of food. Please remove caps and lids. **You do not need to separate paper from non-paper materials.**
- If you have additional material, it may be placed out for collection in recycling bins or paper bags.
- Please cut or fold cardboard boxes into three foot by three foot pieces so they can fit into truck compartments.
- The inside page of the Refuse and Recycling Brochure has detailed information which materials can and cannot be recycled in the curbside program.

Other Services We Provide:

- Free automatic bill payment options
- Two sizes of carts (65 or 90 gallon) for refuse pickup
- Temporary Large Container Rental (Roll-off Boxes)
- Extra Bulky Pickup Items: Such as mattresses, carpet and other discarded large household items. These items must have a refuse sticker. Please see the brochure for preparation instructions.
- Yard Waste Subscription Service: season runs from April through November

For More Information, Call:

Allied Waste at (630) 964-3232

Village of Clarendon Hills: (630) 286-5400

