

Village of Clarendon Hills Refuse and Recycling Guide

The Village of Clarendon Hills, in cooperation with Allied Waste, is pleased to provide this reference guide for the solid waste and recycling program. This guide is designed to provide you with a reference for the Clarendon Hills recycling, household waste and yard waste program. Please keep it in a convenient place for future reference.

GENERAL PROVISIONS

- Refuse, recycling and yard waste are collected on Mondays, except for homes that are located south of 55th Street where collection is on Wednesday.
- Service may be affected by the following holidays: New Year's Day, Memorial Day, Independence Day, Labor Day, and Christmas Day. If one of these holidays falls on a Sunday or Monday, service will be delayed until Tuesday.
- Please have all containers at the curb before the morning of collection. Collection hours are 6 AM. to 6 PM. Please remove empty bins and containers from the curb after pick up as a courtesy to your neighbors.
- Allied Waste bills quarterly in advance. Payment is expected thirty days from the billing date. A senior citizen's discount is available for those over sixty-five. Please send Allied Waste a copy of your driver's license to establish eligibility.

SOLID WASTE (REFUSE)

- Two containers or bags of household waste are collected weekly without stickers. Additional containers and bulk items must have a pre-paid sticker attached.
- A list of retailers who sell Clarendon Hills solid waste stickers can be found on the back of this brochure.
- Back door refuse service is available for an additional charge. Please contact Allied Waste if you would like information about this service option. Backdoor service is for refuse only; recycling and yard waste are collected from the parkway.

Acceptable Containers

- Refuse must be placed in a can or bag with a capacity of no more than 33 gallons. Containers may not exceed 60 pounds. All cans must have two handles. **Due to worker injuries, containers larger than 33 gallons will not be collected. Please check container size before purchasing new cans.**
- In order to reduce windblown litter, please place refuse in plastic bags inside refuse containers.
- Refuse carts are available for use by residents. These carts have attached lids and wheels for convenience and maneuverability. A cart will hold approximately three cans of household waste. Although there is an additional charge, if you regularly have more than two cans of household garbage, cart service may be less expensive than purchasing stickers. Please contact Allied Waste for information about cart service.

Large Household Items

- Bulk items that do not fit in cans or bags may be placed at the curb for collection. A refuse sticker must be attached. Bulk items include sofas, tables, mattresses, box springs, bookcases, dressers, standard sized televisions and other appliances that do not require special handling.
- In order to be collected, carpet must be cut into four-foot lengths and securely bound with tape, rope or twine in rolls. Rolls must not be more than two feet in diameter. A refuse sticker must be attached to each roll.
- Large appliances such as refrigerators, freezers, dehumidifiers, air conditioners, furnaces, stoves, ranges and ovens can be collected from the curb but require special handling. Please contact Allied Waste the Friday before your regular pickup to arrange for service. There is an additional charge for this service.

Special Collections

- Construction material, building material, large amounts of refuse and other loose material that does not fit in a can or bag can be collected as a special pickup. Please call Allied Waste to get a quote on the cost of this service and to schedule a collection.

LOOK INSIDE FOR IMPORTANT INFORMATION ON RECYCLING.

YARD WASTE COLLECTION

- Yard waste generally consists of grass clippings, twigs, brush, leaves and plant materials such as weeds, unwanted plants and roots.
- Please make sure material is free of dirt.
- Do not mix yard waste with refuse or recycling. Each is collected by a different truck and transported to a different processing or disposal facility.
- A yard waste sticker must be attached to each container of yard waste and bundle of twigs or brush.

Schedule

- Yard waste is collected from April 1st through November 30th.

Containers

- Grass clippings, leaves and plant material must be placed in 33-gallon biodegradable paper bags or 33-gallon refuse cans. Plastic bags cannot be collected. If a can is used, it must be clearly marked "Yard Waste" in order for the collection drivers to be able to read it from the street.
- The maximum weight of cans or bags is 60 pounds.
- Yard waste cart service is available for an additional charge. Please contact Allied Waste for service arrangements.

Brush

- Brush must be bundled with natural rope or twine. Please do not use plastic binding or metal.
- Bundles must be no more than four feet in length and 18 inches in diameter. Individual branches must be no more than four inches in diameter.
- The maximum weight of bundles is 60 pounds.

Fall Leaf Collection

- During October and November, yard waste stickers are not required for paper yard waste bags and cans of leaves. Please note containers with material other than leaves or mixed with leaves will require a yard waste sticker.

Christmas Tree Collection

- Christmas trees will be collected at no charge during the first two weeks in January. No yard waste sticker is needed. Please remove all ornamentation, tinsel and garlands before placing your tree at the curb.

How to use this Guide:

This guide is designed to provide you with a quick and easy reference to the recycling and waste services available. General information on household waste and yard waste service is found on the first foldout. The inside foldout contains a complete reference guide for recycling, explaining the different types of recyclable materials and how to prepare them for pick up.

Rate Schedule

	7/1/07- 6/30/08	7/1/08- 6/30/09	7/1/09- 6/30/10	7/1/10- 6/30/11
2 Can weekly Service (Per Month)	\$16.18	\$16.79	\$17.42	\$18.07
Back Door 2 Can Collection (Per Month)	\$25.80	\$26.83	\$28.04	\$29.30
Refuse/Yardwaste Sticker (Per Sticker)	\$2.00	\$2.10	\$2.15	\$2.20
Yardwaste Toter (Per Month)	\$23.64	\$24.70	\$25.81	\$26.97
Refuse 90 Gallon Toter (Per Month)	\$21.79	\$22.77	\$23.79	\$24.86

STICKER VENDORS:

Ace Hardware, 1 S. Prospect, Clarendon Hills
 Jewel, 55th and Holmes, Clarendon Hills
 The Village Hall, 1 N. Prospect, Clarendon Hills
 Police Department 448 Park, Clarendon Hills
 Jewel, 4 E. Ogden, Westmont

For additional information on services available, call:

**Allied Waste
 (630) 964-3232
 or the Village Office
 at (630) 323-3500**

Complete recycling program reference guide

Village of Clarendon Hills
 One North Prospect Ave.
 Clarendon Hills, IL 60514

Village of Clarendon Hills



SOLID WASTE AND RECYCLING PROGRAM

*Allied Waste: 630.964.3232
 Village: 630.323.3500*

REFERENCE GUIDE

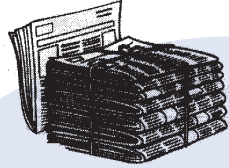
Village of Clarendon Hills Recycling Collection Services

SORT 1— PAPER ITEMS

NEWSPAPER

Place separate from other paper in brown paper bag or bundle with only string or twine

- once bundled or bagged, paper may be set inside recycling bin or placed next to the bin at curbside
- all newspaper inserts acceptable



NO food residue

OTHER PAPER ITEMS

Mix all the following together in a brown paper bag or bundle with only string or twine

Magazines and Catalogs

- glossy and non-glossy accepted

Telephone Directories

- covers do not need to be removed

Kraft Brown Paper Bags

- paper grocery bags

Corrugated Cardboard

- cardboard boxes
- pizza boxes- only if no food residue

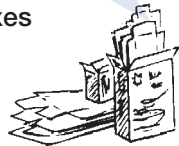


Paperboard (Chipboard)

- cereal boxes
- clothing boxes
- pasta boxes
- tissue boxes

Wet Strength Carrier Stock

- carriers for beer and soda



Frozen Food Boxes

- cream colored paperboard containers used to hold frozen foods

Junk Mail

- brochures
- flyers
- greeting cards
- advertisements
- post cards
- window envelopes

Mixed Paper

- stationery
- notebook paper
- post-it/notes
- computer paper
- typing paper
- bond envelopes

RECYCLING COLLECTION GUIDELINES

Preparation of Materials

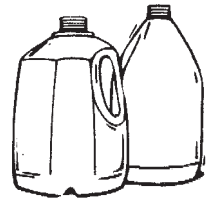
- Non-paper materials may be mixed together inside your blue recycling container.
- Do not place recyclable materials in plastic grocery bags.
- All recyclable materials should be rinsed free of food with caps/lids removed.
- Paper items must be separated from non-paper items in the following fashion:
 - Bag newspaper separately or place loose in a separate recycling bin with other paper items.
 - Bag all other paper items together.
 - Newspaper and other paper items may be bundled and placed inside or next to bin.
- Flatten all corrugated cardboard boxes, paperboard, and wet strength carrier stock and remove any non-paper packing material.
- Cut or fold corrugated cardboard into 3' x 3' pieces, to fit into truck compartments. Please no food residue.
- To reduce the likelihood of materials being blown away on windy days, please place a paper bag of newspaper on top of the bin.

SORT 2 — NON-PAPER MATERIALS

PLASTIC

PET (#1) Plastic Bottles & Containers

- 2-liter soda bottles
- plastic beverage containers
- plastic plates and trays
- plastic flower pots
- other #1 non-bottle shaped containers



HDPE (#2) Plastic Bottles & Containers

- laundry detergent
- milk and water bottles
- margarine tubs
- shampoo and personal care bottles
- other #2 non-bottle shaped containers
- plastic cups
- baby wipe containers

No motor oil, anti-freeze, pool chemical, or other hazardous waste containers

PVC (#3) Bottles

- health and beauty-aid bottles

LDPE (#4) Bottles and Containers

- ice cream tubs
- misc. dairy product containers
- margarine tubs

PP (#5) Bottles and Containers

- yogurt tubs
- sour cream tubs
- misc. condiment bottles
- cottage cheese tubs
- syrup bottles

OTHER (#7) Containers

- plastic packaging
- plastic 6-pack and 12-pack rings

Plastic 6- & 12-pack rings

NO film plastic, plastic wrap, or plastic bags
NO packing peanuts

METAL

Rinse clean of food or other products

- aluminum cans
- steel or tin cans
- aluminum baking trays/pie plates
- formed steel containers such as decorative tins, cookie tins, etc
- aluminum foil
- empty aerosol cans -please discharge all contents and pressure
- empty paint cans- lids off, you can discard of any unwanted paint by pouring it into a container of cat litter. Allow the litter to air dry, then discard with your regular refuse.



NO plastic paint cans or buckets

NO gasoline cans

NO hazardous chemical cans-formed steel & aluminum containers

GLASS

Rinse clean of food or other products
Remove all caps and lids

- bottles, jars and containers
- colored and clear glass

NO mirrors or window glass or light bulbs/fixtures accepted



BEVERAGE CARTONS & DRINK BOXES

Empty, rinse & flatten

- gable top milk and juice cartons
- juice boxes

General Provisions

- There is no limit to the number of recycling containers you may set out for collection.
- Stickers are not required on recycling containers.
- Please write your address on your recycling container(s) to assist in recovery if lost or stolen.
- If you move, village provided recycling containers should be left for the new homeowner.