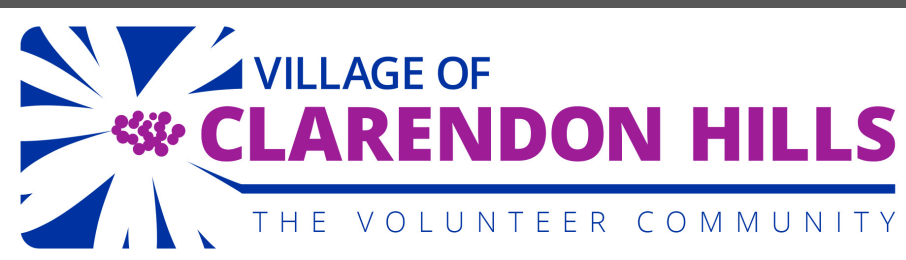
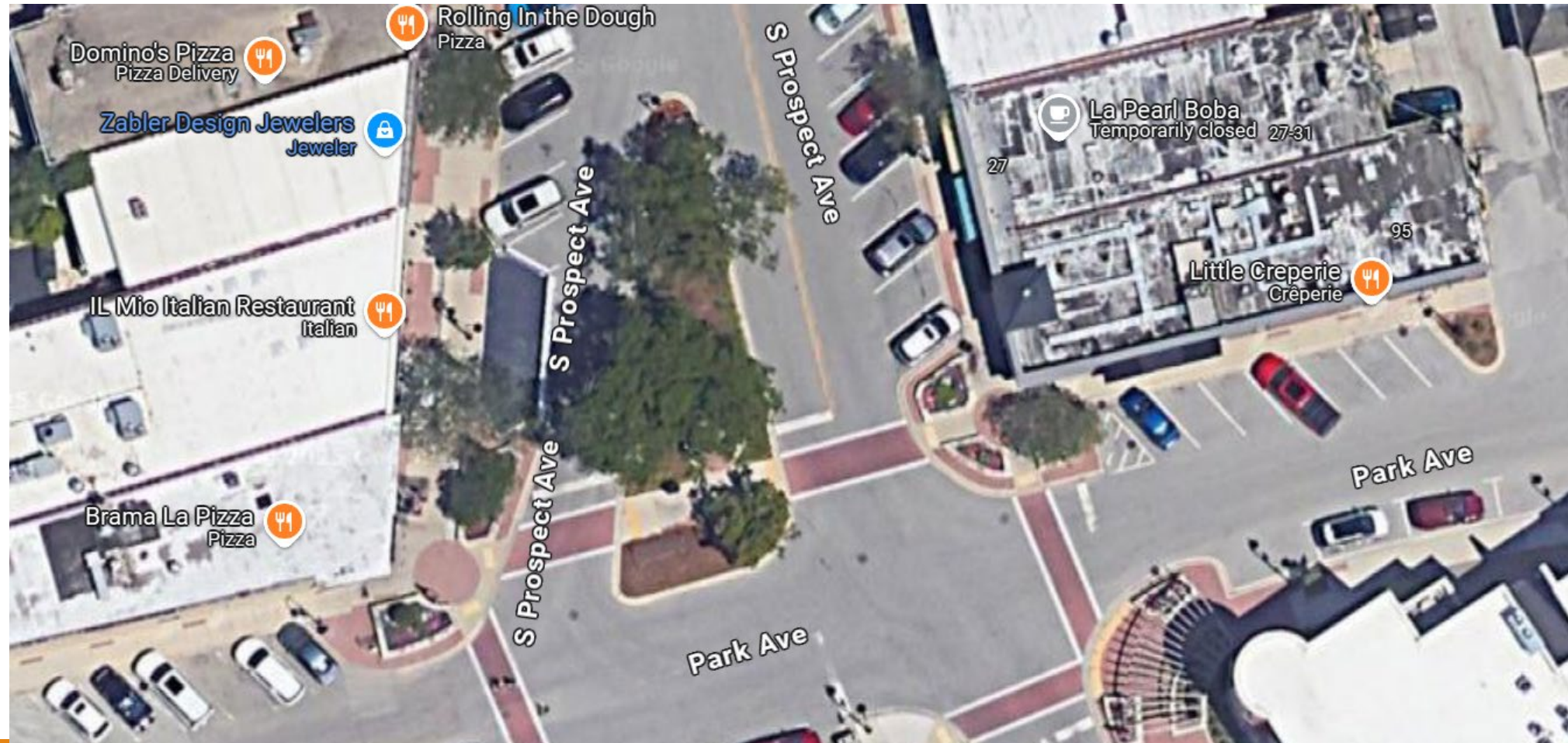


ENHANCING OUR
VILLAGE

Downtown Plaza



Location



An Answer to a Question that No One Asked



Is this the best
our community
can be?



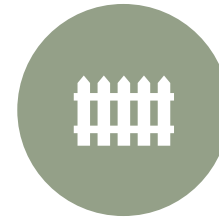
Covid era
dining with
concrete
barriers on
asphalt streets?



Mismatch tents
and furniture
defining our
“quaint”
downtown?



Prioritizing
vehicles over
pedestrians and
accessibility?



Fenced off
public space
which is
restricted from
public use?



Is this REALLY
the best our
community can
be?

Vision for Downtown

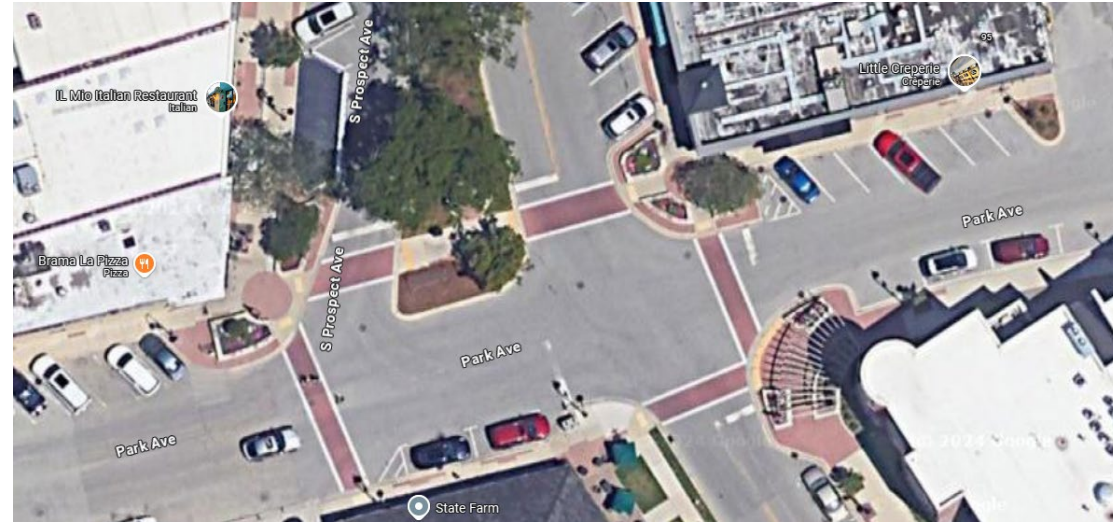
- Improve Safety
- Provides Accessibility to Everyone
- Encourages Community Engagement
- Achieves Goals of Downtown Master Plan
- Enhance a Small Town Aesthetics “Mayberry Town Square”
- Enhances and Enables Downtown Events
- Achieve a Vibrant and Sustainable Downtown



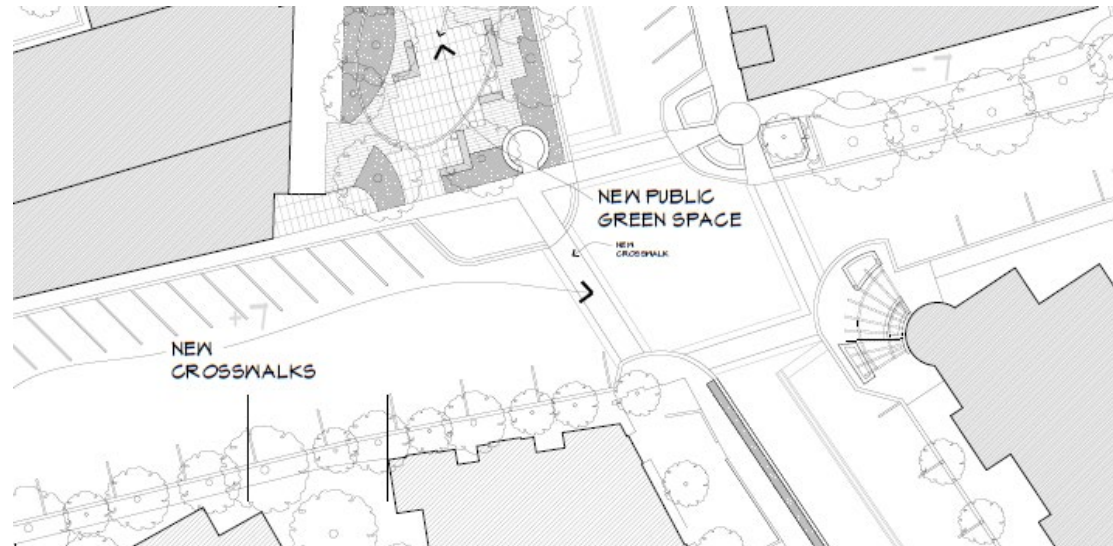
Safety

- Eliminate Potentially Dangerous Pedestrian Crossing
- Move Dining Off Street (currently 18 inches from traffic flow)
- Make Room for Safe Gathering Away from Street Traffic (after school hang out)
- Create a Overall Safe Separation from Traffic

Before



After





Accessibility

- Create an ADA Compliant Space for Dining and Recreation
- Create Consistent Grade Area (no curbs)
- Create Wide Sidewalk for Strollers, Dog Walkers and all Pedestrians
- Enhance Pedestrian Access to Prospect Avenue Businesses

Engagement

- Create Natural Meeting Place for our Residents
- Add a Focal Point of our Community for Special Events
- Opportunity to Enjoy our Quaint Downtown for Coffee, Conversation and Social Interactions





Downtown Master Plan References

- “The adopted DTMP plan envisioned “an attractive, small scale, pedestrian-oriented shopping district with **pocket parks and plazas**, expanded streetscape amenities, and new housing products, shops, and restaurants”
- “**There is limited space for community gathering/activities**”
- “The **Downtown** lacks parks and open space for passive recreation (i.e. walking, bicycling and gathering)”
- “The redevelopment of public and private properties provides opportunity to **create private and adjoining public spaces and plazas**”
- “Create linear parks and plazas north AND SOUTH of the BNSF railroad to create festival streets for community events and passive social gathering by residents and Downtown visitors.”

Charm

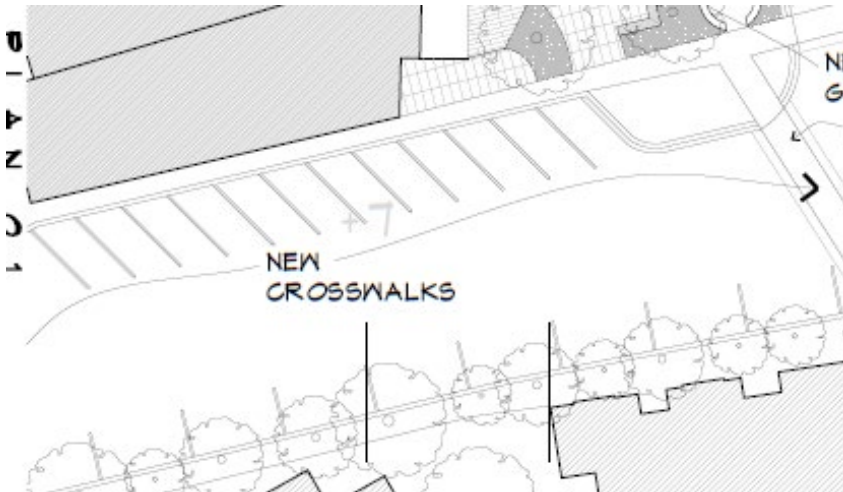
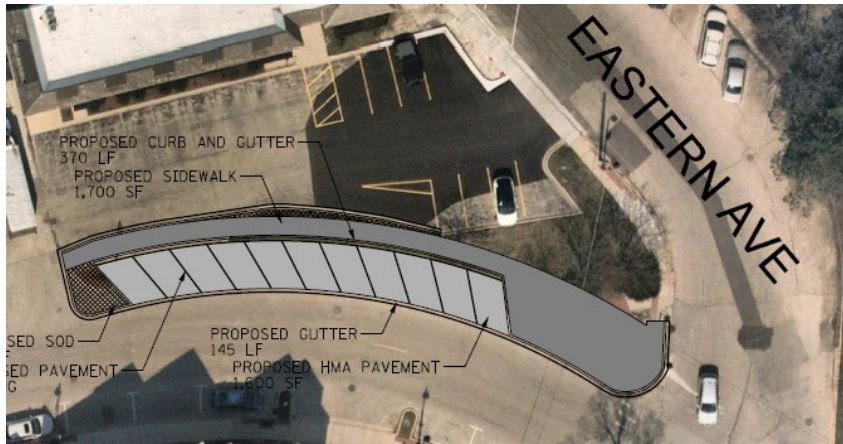
- Enhance our Small Town Community Charm
- Create Space not Limited to Special Events
- Become a Go-To Destination to Meet “See You at the Plaza”
- Build on a Small Town Feel, Unique to the Western Suburbs





Staging for Events

- Resident feedback is for more and bigger events
- Businesses suffer from street shutdown
- Space for small events
- Large events - Shorter Street Shutdowns



Raised Concerns

- Parking –Net Gain will be Achieved Along Park Avenue
- Traffic - Initial Traffic Study Showed no Impact, Village to Re-run during School Operations in April at no cost to Confirm
- Emergency Vehicle (Fire Truck) Maneuverability – No Impact on Ability to Navigate

Staff Assessment



Fire Department – No Impact



Police – Positive, Enhances Pedestrian Safety by Eliminating Crosswalk, Creates Clearer Traffic Flow (no U-Turns or Left Turns)



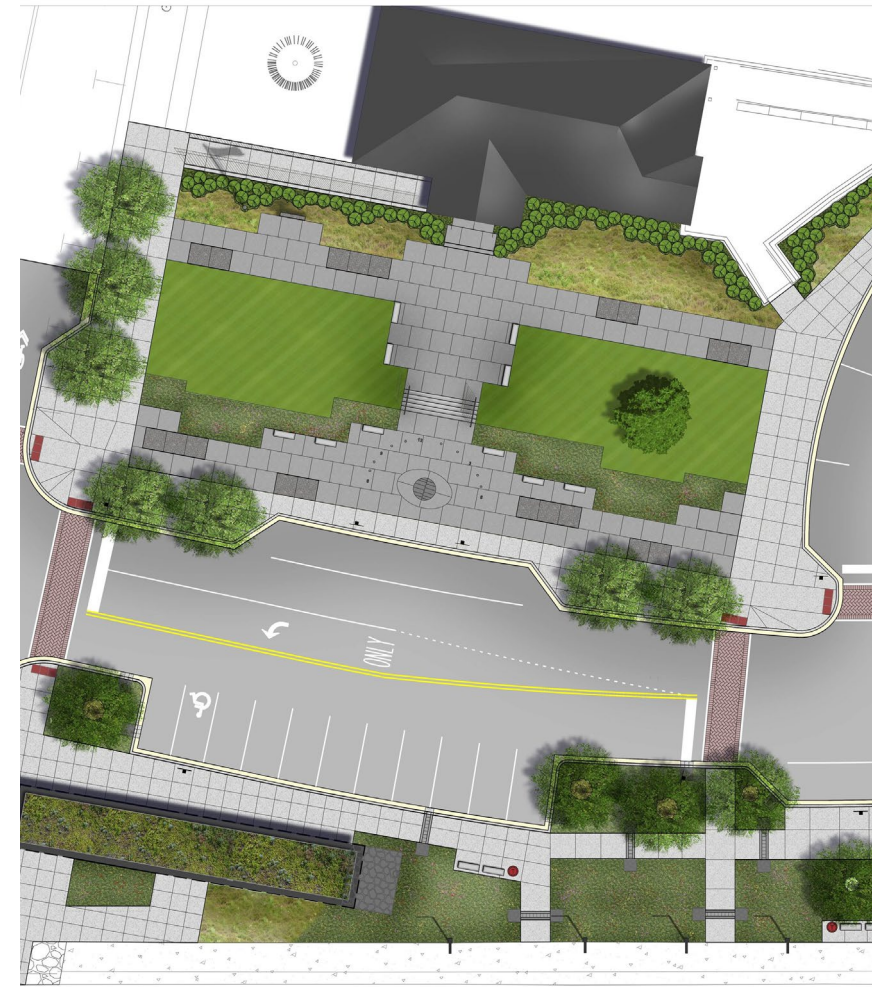
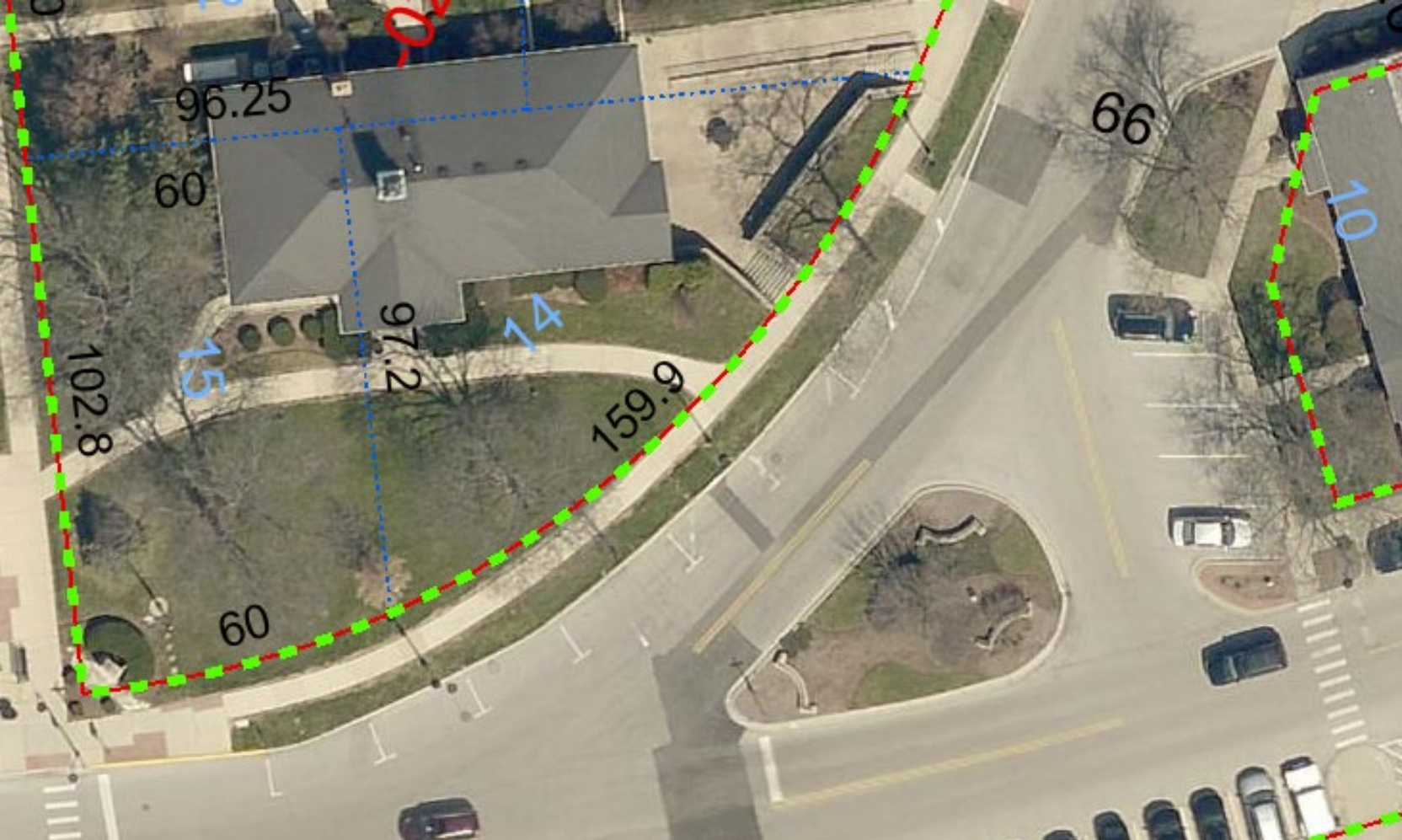
Public Works – Eliminate need to install and remove temporary barriers, improve special event set up effort, potentially lower maintenance cost



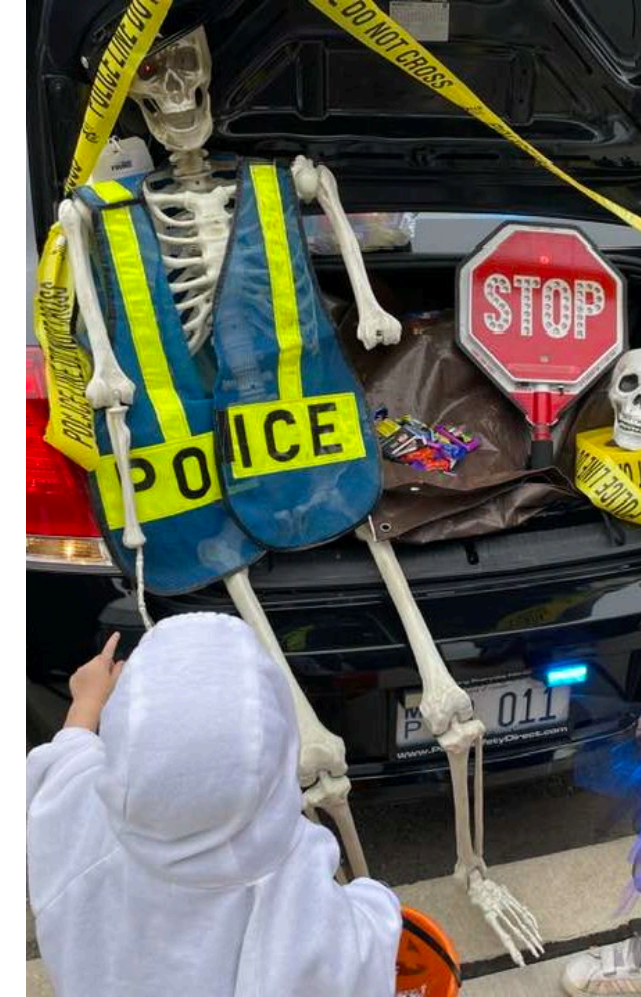
Development – Creates a “Destination for Businesses” and enhances our overall “Brand” as a Village



Finance- Downtown TIF projected at large surplus at end of life (\$17 Million+). Tax Increment outpacing early projections.



Proven Concept- Village Hall Plaza



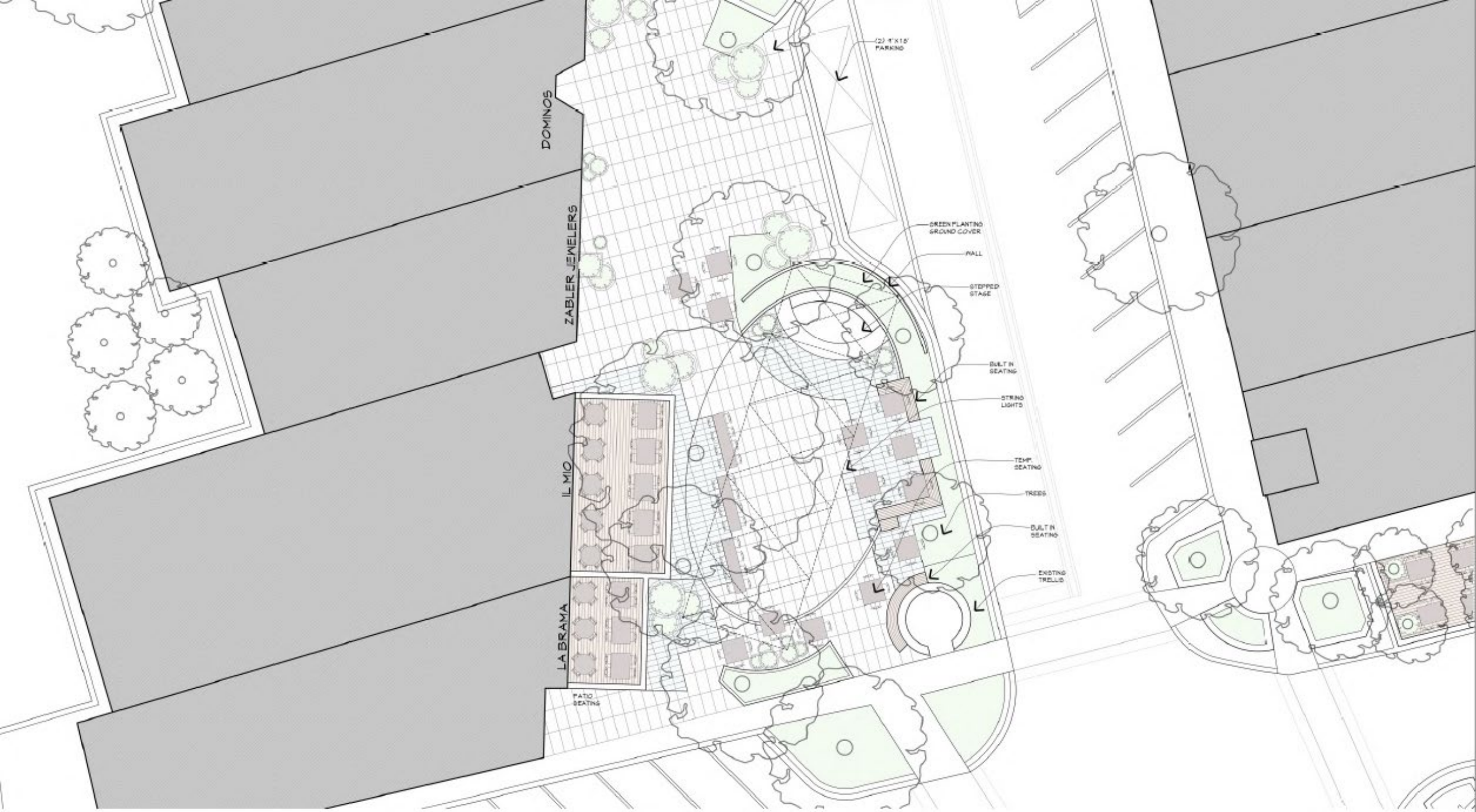
Use in Every Season

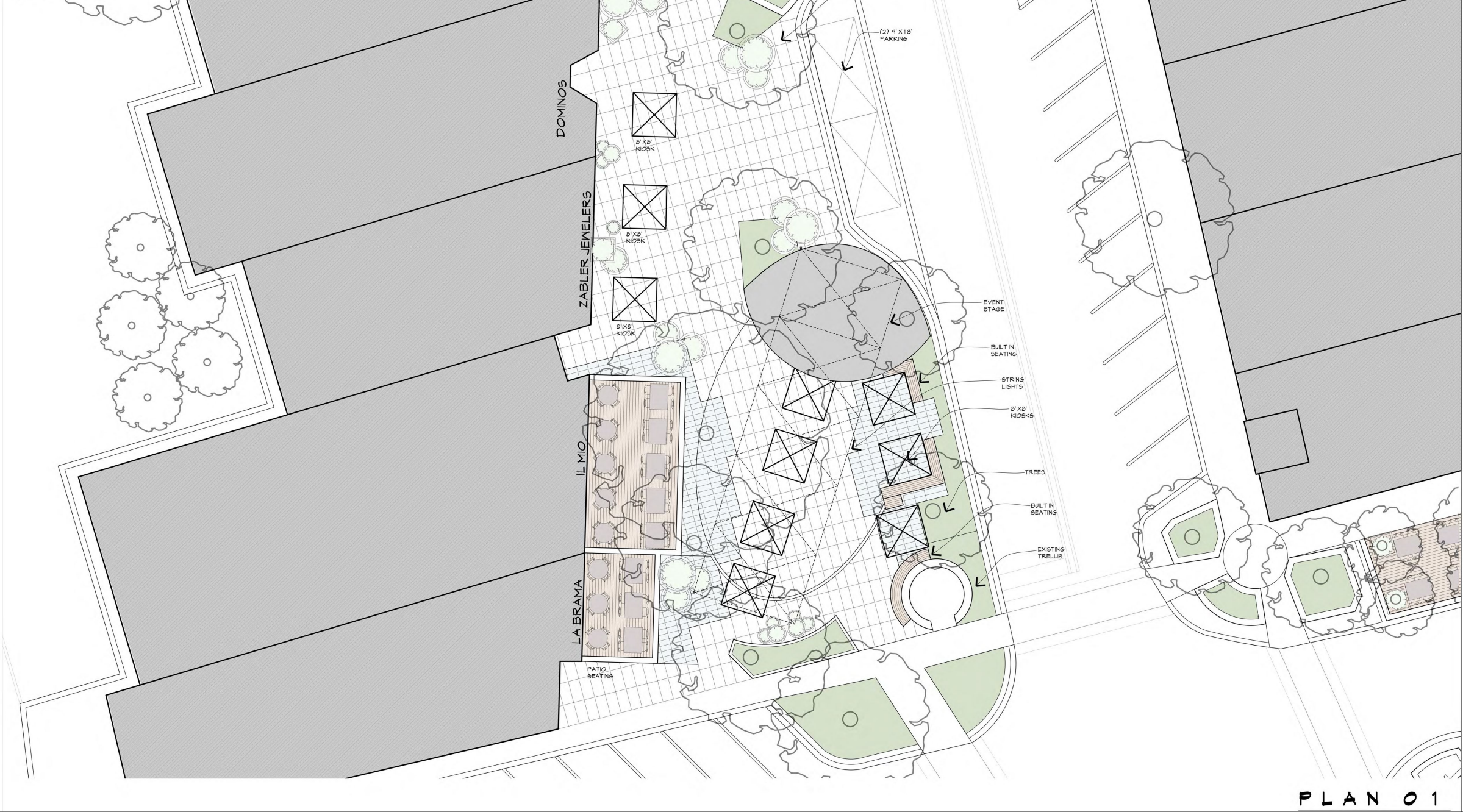
Imagine the Possibilities...

For Our Downtown









PLAN 01

CLARENDON HILLS PLAZA
CLARENDON HILLS, IL

M A



























Conclusion

Results in a Win-Win-Win-Win-Win

Improves Safety, Accessibility, Engagement, Aesthetics
and a Vibrant and Sustainable Downtown

No Negative Impact in Parking, Traffic or Emergency
Response

Next Steps

Village to Run Follow-up
Traffic Study (no cost)

Village to Engage
Engineering Firm to
Develop Project Cost
Estimates

Bring Back for Discussion
in two Months after
Traffic Study and
Engineering Review

